

catcastle grey

Course grained brown/grey/variegated sandstone.

Good paving material and suitable for severe exposure areas such as sea walls and reservoirs



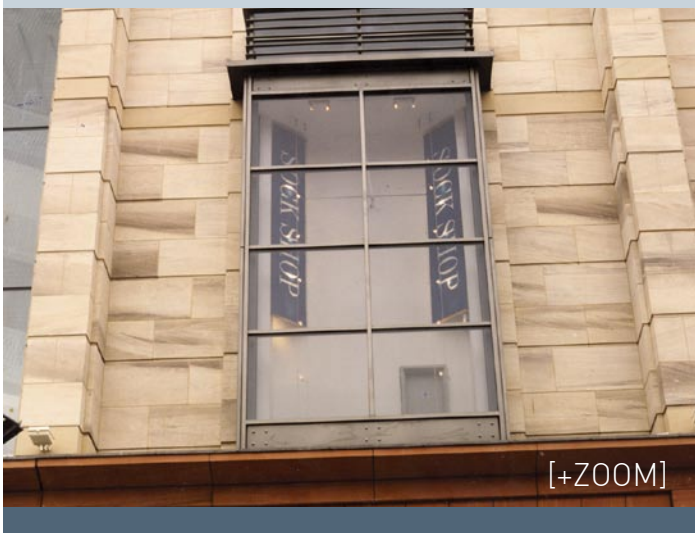
Applications:

Ashlar walling	✓
Thin cladding Fischer type system	40mm min
Dressed / Carved stone	Dressings but not fine detail
Rock faced walling	✓
Rubble walling	
Rockery stone	
External flooring / Paving	✓
External steps / Platts	✓
Internal flooring (requires sealant)	✓

Quarried at Lartington nr Barnard Castle in Teesdale, this quarry was initially opened up when the railway was laid over Deepdale valley on its route to Carlisle. Consequently the stone was used on many railway bridges North of York as well as the Abutments to Lendal bridge in York. Catcastle's durable nature also lead to its use on reservoirs and harbour walls in the North East.

Catcastle is a unique stone; its has a coarse grain with occasional large quartz inclusions, and variegated brown feature markings.

Recently it was used to build Glasgows Sherrifs Court, and Hull Crown Court and the considerable development of the Buchanan Shopping Centre Glasgow. It was also used for the restoration of Stirling Castle, notably the reconstruction of the Great Hall including the full parapet.



Density (kg/m ³)	2353
Compressive Strength (N/mm ²)	65.3
Absorbion (%)	4.06
Porosity (%)	15.39
Saturation Coefficient	0.59
Acid Immersion test	pass
Salt Crystallisation (%)	-0.64
Flexural Strength (dry/perp)(N/mm ²)	5.7

Dunhouse
www.dunhouse.co.uk



Dunhouse have over 75 years experience in the quarrying and supply of dimensional building stone and currently operate nine quarries in the North of England and Scotland. We quarry a wide range of high quality stone, including buff stone from Northumberland and Durham, Scottish Red Sandstone and Weardale self bedded paving and walling stone.

We cater for the needs of the domestic and commercial customer, supplying stone to self build projects, as well as city centre developments and renovations.

Our capabilities range from supplying intricate carving to major refurbishment projects including Jenners Store and the Scottish National Portrait Gallery, to supplying large scale masonry developments including Clydesdale Plaza (10,000m² of Ashlar) and Scarborough Pier (3500tonnes of sawn blocks). Our Lathes and CNC machinery have turned columns for many prestigious projects including Covent garden and Victoria Bus Station.

Sample photo's are indicative of colour and character of the material. The amount of variation is subject to the type of material and current quarry conditions.

The photo's are generally demonstrative of the grain, colour and composition of the material. Any variations due to nature cannot be considered defects. Variation of shade and marking is a feature of a natural material. The Standard Conditions of Dunhouse Quarry Company Limited will apply.

Photo's, from the top:

- Sheriffs Court, Glasgow
- Wall and fence pillar, Gilling, Yorkshire
- Stirling Castle, Stirling

Front:

- Buchanan Galleries Shopping Centre, Glasgow

www.dunhouse.co.uk

Dunhouse Quarry Ltd

Cleatlam
Darlington
County Durham
DL2 3QU

General Enquiries:

+44 (0) 1833 660 208

Contract Sales Office:

+44 (0) 1833 660 999

Email:

enquiries@dunhouse.co.uk

Fax:

+44 (0) 1833660 748