

# corncockle

Medium grained red sandstone.



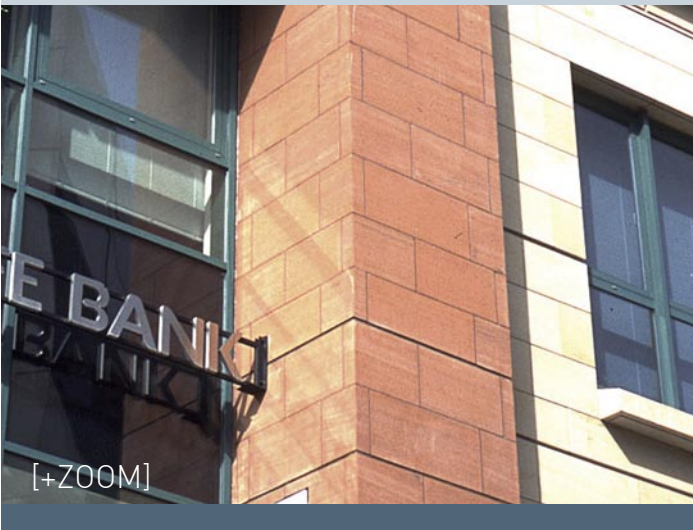
## Applications:

Ashlar walling	✓
Thin cladding Fischer type system	
Dressed / Carved stone	✓
Rock faced walling	✓
Rubble walling	✓
Rockery stone	✓
External flooring / Paving	
External steps / Platts	
Internal flooring (requires sealant)	✓

Extracted near Lockerbie in Dumfriesshire this Red Sandstone from the Permian age has a rich history.

Most famous for the Dinosaur footprints uncovered in the 1800's this stone was most notably used for the Caledonian Hotel at the end of Princess Street Edinburgh. During this period thousands of tonnes of block were extracted from Corncockle Quarry and used throughout Scotland as well as being shipped to other major ports in the world as ballast.

More recently Corncockle has been used for major projects including the Buchanan Shopping centre Glasgow, Clydesdale Plaza Lothian Road Edinburgh, Thames Court London, and various Louis Vuitton Shops throughout the world.



Density (kg/m <sup>3</sup> )	2132
Compressive Strength (N/mm <sup>2</sup> )	72.5
Absorption (%)	5.66
Porosity (%)	19.59
Saturation Coefficient	0.62
Acid Immersion test	pass
Salt Crystallisation (%)	+2.52
Flexural Strength (dry/perp)(N/mm <sup>2</sup> )	6.9

**Dunhouse**  
www.dunhouse.co.uk



Dunhouse have over 75 years experience in the quarrying and supply of dimensional building stone and currently operate nine quarries in the North of England and Scotland. We quarry a wide range of high quality stone, including buff stone from Northumberland and Durham, Scottish Red Sandstone and Weardale self bedded paving and walling stone.

We cater for the needs of the domestic and commercial customer, supplying stone to self build projects, as well as city centre developments and renovations.

Our capabilities range from supplying intricate carving to major refurbishment projects including Jenners Store and the Scottish National Portrait Gallery, to supplying large scale masonry developments including Clydesdale Plaza (10,000m<sup>2</sup> of Ashlar) and Scarborough Pier (3500tonnes of sawn blocks). Our Lathes and CNC machinery have turned columns for many prestigious projects including Covent garden and Victoria Bus Station

Sample photo's are indicative of colour and character of the material. The amount of variation is subject to the type of material and current quarry conditions.

The photo's are generally demonstrative of the grain, colour and composition of the material. Any variations due to nature cannot be considered defects. Variation of shade and marking is a feature of a natural material. The Standard Conditions of Dunhouse Quarry Company Limited will apply.

Photo's, from the top:

- Buchanan Galleries, Glasgow. Catcastle Grey upper, Corncockle lower.
- Paisley Sheriffs Court
- Caledonian Hotel, Edinburgh

Front:

- Clydesdale Plaza, Edinburgh

[www.dunhouse.co.uk](http://www.dunhouse.co.uk)

**Dunhouse Quarry Ltd**  
Cleatlam  
Darlington  
County Durham  
DL2 3QU

**General Enquiries:**  
+44 (0) 1833 660 208

**Contract Sales Office:**  
+44 (0) 1833 660 999

**Email:**  
[enquiries@dunhouse.co.uk](mailto:enquiries@dunhouse.co.uk)

**Fax:**  
+44 (0) 1833660 748